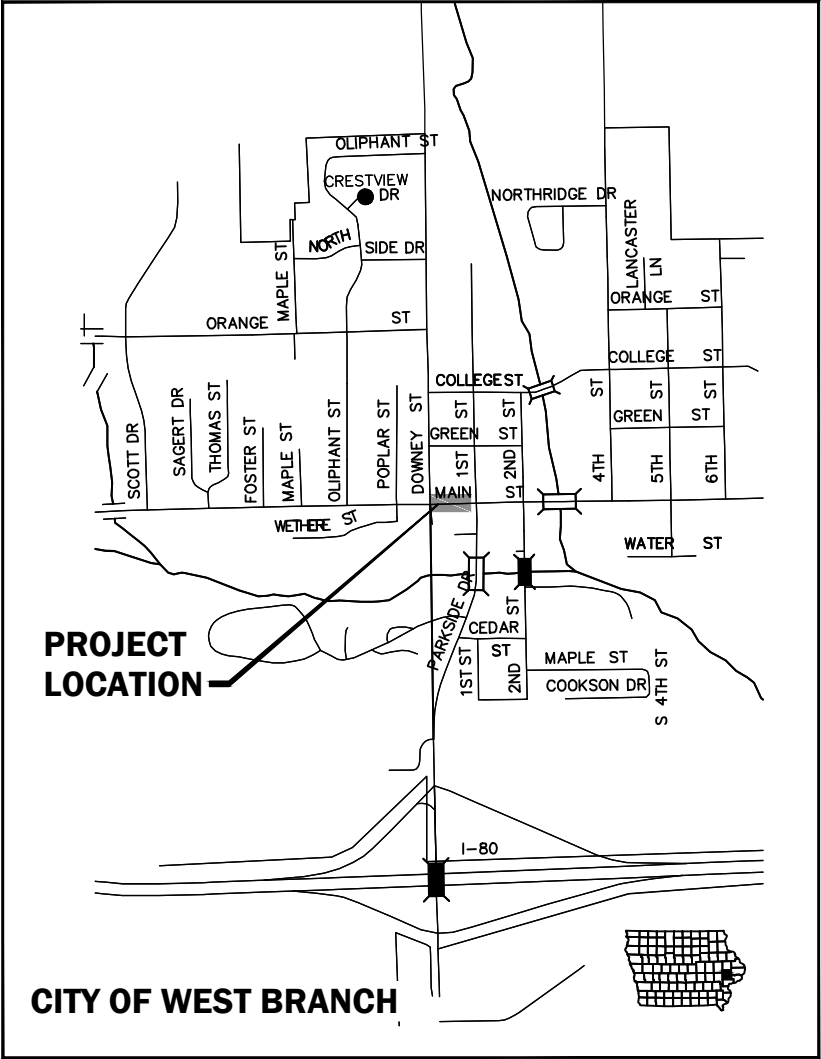


# PLANS FOR MAIN STREET SIDEWALK IMPROVEMENTS - PHASE 2 WEST BRANCH, IOWA



VICINITY MAP  
NOT TO SCALE

GENERAL LEGEND	
	SURVEY LINE & STATION INDICATOR
	CONCRETE SURFACE
	ASPHALT SURFACE
	CONCRETE W/ASPHALT OVERLAY
	LOW GRADE ASPHALT SURFACE
	GRANULAR SURFACE
	DIRT SURFACE
	BRICK SURFACE
	SURFACING REMOVAL/REPLACEMENT
	EARTH SECTION
	NEW SEWER/MANHOLE
	NEW SEWER/INTAKE
	NEW WATER MAIN
	NEW FORCE MAIN
	NEW HYDRANT
	NEW WATER VALVE
	EXISTING SANITARY SEWER AND SIZE
	EXISTING STORM SEWER AND SIZE
	EXISTING WATER MAIN AND SIZE
	EXISTING FORCE MAIN AND SIZE
	GAS MAIN AND SIZE
	UNDERGROUND POWER LINE
	OVERHEAD POWER LINE
	UNDERGROUND TELEPHONE LINE
	CABLE TELEVISION LINE
	FIBER OPTICS
	TOP OF EMBANKMENT
	TOE OF EMBANKMENT
	DRAINAGE COURSE
	SANITARY MANHOLE
	STORM WATER MANHOLE
	ELECTRIC MANHOLE
	TELEPHONE MANHOLE
	CURB INTAKE
	AREA OR BEEHIVE INTAKE
	EXISTING HYDRANT
	EXISTING WATER VALVE
	GAS VALVE
	UTILITY POLE
	GUY ANCHOR
	STREET LIGHT
	SIGN
	TELEPHONE CABLE JUNCTION BOX
	TRAFFIC SIGNALS
	PEDESTRIAN CONTROL LIGHT
	RAILROAD CONTROL LIGHT
	RAILROAD SIGN
	UTILITY ACCESS COVER
	PARKING METER
	TREE
	EVERGREEN
	STUMP
	BUSH, SHRUB OR HEDGE
	CULVERT; SIZE AND TYPE
	FLARED END SECTION
	RAILROAD
	MAILBOX
	FENCE (MISC.)
	SECURITY FENCE
	WOOD FENCE
	SILT FENCE
	CHAIN LINK FENCE
	PROPERTY LINE
	PROPERTY PIN
	SECTION CORNER
	PLAT BOUNDARY
	BUILDING
	ELEVATION MARKER
	CENTERLINE
	DIA.
	ELEV.
	PVC
	CAST IRON PIPE
	DUCTILE IRON PIPE
	CORRUGATED METAL PIPE
	VITRIFIED CLAY PIPE
	REINFORCED CONCRETE PIPE
	REINFORCED CONCRETE ARCH PIPE
	LINED REINFORCED CONCRETE PIPE
	LINED CONCRETE PRESSURE PIPE
	STATION
	LINE AHEAD
	LINE BACK
	BENCH MARK AND NUMBER
	RIGHT-OF-WAY
	POINT OF INTERSECTION
	POINT ON TANGENT
	LINEAR FEET
	TACKED HUB
	SOIL BORING AND NUMBER
	POINT OF VERTICAL CURVATURE
	POINT OF VERTICAL TANGENCY
	VERTICAL CURVE
	POINT OF CURVATURE
	POINT OF TANGENCY
	MIDDLE ORDINATE
	DRAWING
	CONTROL POINT AND NUMBER
	HIGH PRESSURE GAS
	INTERMEDIATE PRESSURE GAS
	INVERT
	EACH WAY, EACH FACE
	EACH WAY
	AT
	DRAWING NUMBER

NOTE: THIS IS A GENERAL LEGEND. ITEMS MAY OR MAY NOT APPEAR ON DRAWINGS.

DRAWING INDEX	
NO.	DRAWING TITLE
A.01	INDEX AND TITLE SHEET
C.01	QUANTITIES & REFERENCE
D.01	DEMOLITION PLAN
D.02	PLAN
D.03	PLAN - NOTES
G.01	CONTROL
S.01	SIDEWALK TABULATIONS

- GENERAL NOTES
- ALL ELEVATIONS ARE TO CITY OF WEST BRANCH DATUM.
  - SHAPE ALL DITCHES TO DRAIN AFTER CONSTRUCTION.
  - CONFIRM LOCATION AND DEPTH OF ALL EXISTING UNDERGROUND UTILITIES AS REQUIRED TO ELIMINATE CONFLICTS PRIOR TO CONSTRUCTION. ALLOW UTILITY PERSONNEL TO RELOCATE UTILITIES WHERE CONFLICTS OCCUR.
  - DO NOT INTERRUPT EXISTING UTILITIES OR INDIVIDUAL SERVICES UNLESS DIRECTED BY ENGINEER.
  - LOCATIONS OF CONSTRUCTION LIMIT LINES SHOWN ON PLANS ARE APPROXIMATE. ENGINEER WILL LOCATE CONSTRUCTION LIMITS IN FIELD. CONFINE ALL CONSTRUCTION OPERATIONS, INCLUDING ACCESS TO WORK, TO CONSTRUCTION LIMITS.
  - SET MANHOLE COVERS FLUSH WITH PROPOSED GRADES UNLESS OTHERWISE NOTED.
  - STATIONING IS ALONG CENTER LINE OF PAVEMENT, UNLESS OTHERWISE NOTED.
  - PROTECT UTILITY POLES, LINES AND APPURTENANCES NOT SHOWN FOR RELOCATION.
  - RESET ALL PROPERTY PINS DISTURBED BY CONSTRUCTION; PINS RESET BY REGISTERED LAND SURVEYOR; COST IS INCIDENTAL TO CONSTRUCTION.
  - PROTECT ALL SURFACING, NOT INDICATED BY SHADING FOR REMOVAL AND REPLACEMENT FROM DAMAGE DURING CONSTRUCTION.

PROTECTION OF VEGETATION

TREES AND OTHER VEGETATION WHICH MAY BE REMOVED ARE MARKED WITH AN "X" OVER THE APPROPRIATE SYMBOL. FOR EXAMPLE, 12" INDICATES THE REMOVAL OF A 12" TREE. REPLACEMENT, BY CONTRACTOR, OF THESE ITEMS IS NOT REQUIRED. TUNNEL, INSTALL TIGHT SHEETING, HAND EXCAVATE OR EMPLOY OTHER MEANS APPROVED BY ENGINEER TO PROTECT EXPOSED PORTIONS AND ROOT SYSTEMS OF TREES AND OTHER VEGETATION NOT SCHEDULED FOR REMOVAL. IF TREES AND OTHER VEGETATION NOT SCHEDULED FOR REMOVAL ARE DAMAGED DURING CONSTRUCTION, REPLACE IN KIND AND SIZE AT NO COST TO CITY OR PROPERTY OWNER.



I HEREBY CERTIFY THAT THIS ENGINEERING DOCUMENT WAS PREPARED BY ME OR UNDER MY DIRECT PERSONAL SUPERVISION AND THAT I AM A DULY LICENSED PROFESSIONAL ENGINEER UNDER THE LAWS OF THE STATE OF IOWA.

SIGNATURE: David R. Schechinger

NAME: David R. Schechinger

DATE: 4-2-15

MY LICENSE RENEWAL DATE IS DECEMBER 31, 2016

PAGES COVERED BY THIS SEAL: ALL



DATE	REVISIONS	SCALE	AS NOTED	VERIFY SCALE
		DRAWN	EDG	BAR IS ONE INCH ON ORIGINAL DRAWING.
		CHECKED	DRS	0 1"
		APPROVED	DRS	IF NOT ONE INCH ON THIS SHEET, ADJUST SCALES ACCORDINGLY.
		DATE		
		ISSUED FOR	CONST	



MAIN STREET SIDEWALK - PHASE 2  
CITY OF WEST BRANCH

860 22nd Avenue • Suite 4 • Coralville, Iowa 52241-1565  
319-466-1000 • 319-466-1008(FAX) • 888-241-8001(WATS)

INDEX AND TITLE SHEET

DWG. NO.
A.01
PROJECT 368107

X-REFS:  
FILE PATH: Z:\WEST BRANCH 368107 MAIN STREET SIDEWALK 2013\DRAWINGS\\_PRODUCTION DRAWINGS\C.01-QUANTITIES & EST.

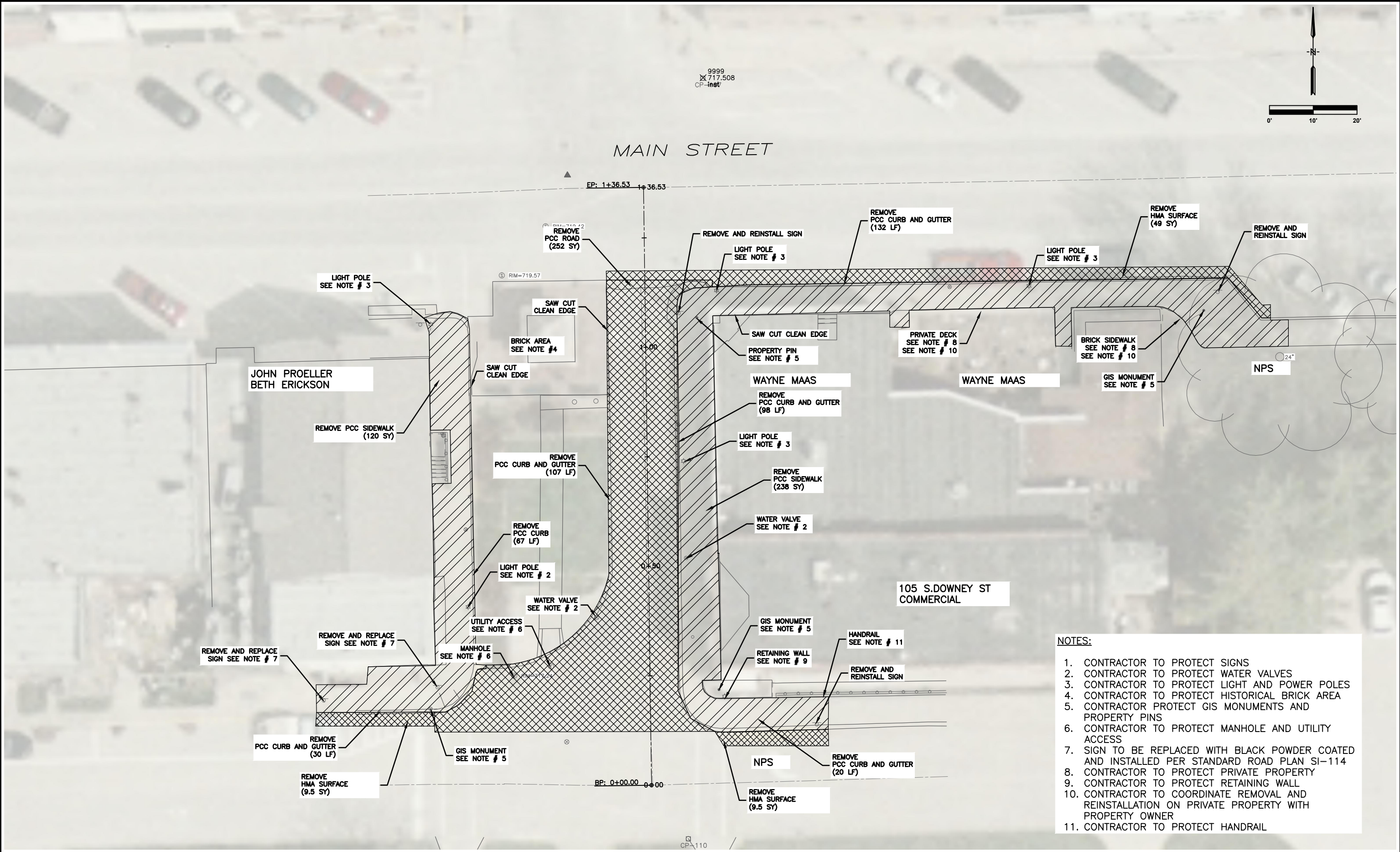
PLOTTED: Thursday, April 02, 2015 10:07:06 AM

ESTIMATED ROADWAY QUANTITIES						
ITEM NO.	ITEM		UNIT	TOTAL	WB	NPS
						AS BUILT QUAN.
1.1	MOBILIZATION		LS	1	1	0
1.2	CONSTRUCTION STAKING		LS	1	1	0
1.3	TRAFFIC CONTROL		LS	1	1	0
1.4	PAVEMENT REMOVAL					
	1.4.1	PCC PAVEMENT	SY	252	203	49
	1.4.2	RMVL OF SIDEWALK	SY	358	301	57
	1.4.3	RMVL OF CURB AND GUTTER	LF	454	382	72
	1.4.4	RMVL OF HMA PAVEMENT	SY	64	44	20
1.5	RMVL & REINSTALL SIGNS		EACH	3	2	1
1.6	SIGNS & INSTALLATION		EACH	2	0	2
1.7	FIXTURE ADJUSTMENT					
	1.7.1	WATER VALVES	EACH	3	3	0
	1.7.2	MANHOLE	EACH	2	2	0
1.8	MODIFIED SUBBASE		CY	48	39.8	8.2
1.9	BASE, STD/S-F PCC, 8"		SY	252	203	49
1.10	HMA		TONS	24	17	7
1.11	SIDEWALK, PCC, 6"		SY	384	327	57
1.12	CURB+GUTTER, PCC, 3.0'		LF	375	303	72
1.13	DETECTABLE WARNING - CURB RAMP		SF	140	100	40
1.14	PEDESTRAIN HANDRAIL		LF	29	29	0

ESTIMATE REFERENCE INFORMATION		
ITEM NO.	ITEM CODE	DESCRIPTION
1.1	MOBILIZATION	
1.2	CONSTRUCTION STAKING	
1.3	TRAFFIC CONTROL	
1.4	PAVEMENT REMOVAL	
	1.4.1	PCC PAVEMENT
	1.4.2	RMVL OF SIDEWALK
	1.4.3	RMVL OF CURB AND GUTTER
	1.4.4	RMVL OF HMA PAVEMENT
1.5	RMVL & REINSTALL SIGNS	
1.6	SIGNS & INSTALLATION	
1.7	FIXTURE ADJUSTMENT	
	1.7.1	WATER VALVES
	1.7.2	MANHOLE
1.8	MODIFIED SUBBASE	
1.9	BASE, STD/S-F PCC, 8"	
1.10	HMA	
1.11	SIDEWALK, PCC, 6"	
1.12	CURB+GUTTER, PCC, 3.0'	
1.13	DETECTABLE WARNING - CURB RAMP	
1.14	PEDESTRAIN HANDRAIL	

PLOTTED: Thursday, April 02, 2015 10:07:16 AM

X-REFS: 2012-3-1 Aerial 2 & 368107 Topo & 368107 Boundary  
FILE PATH: Z:\WEST BRANCH 368107 MAIN STREET SIDEWALK 2013\DRAWINGS\\_PRODUCTION DRAWINGS\DWG.D01



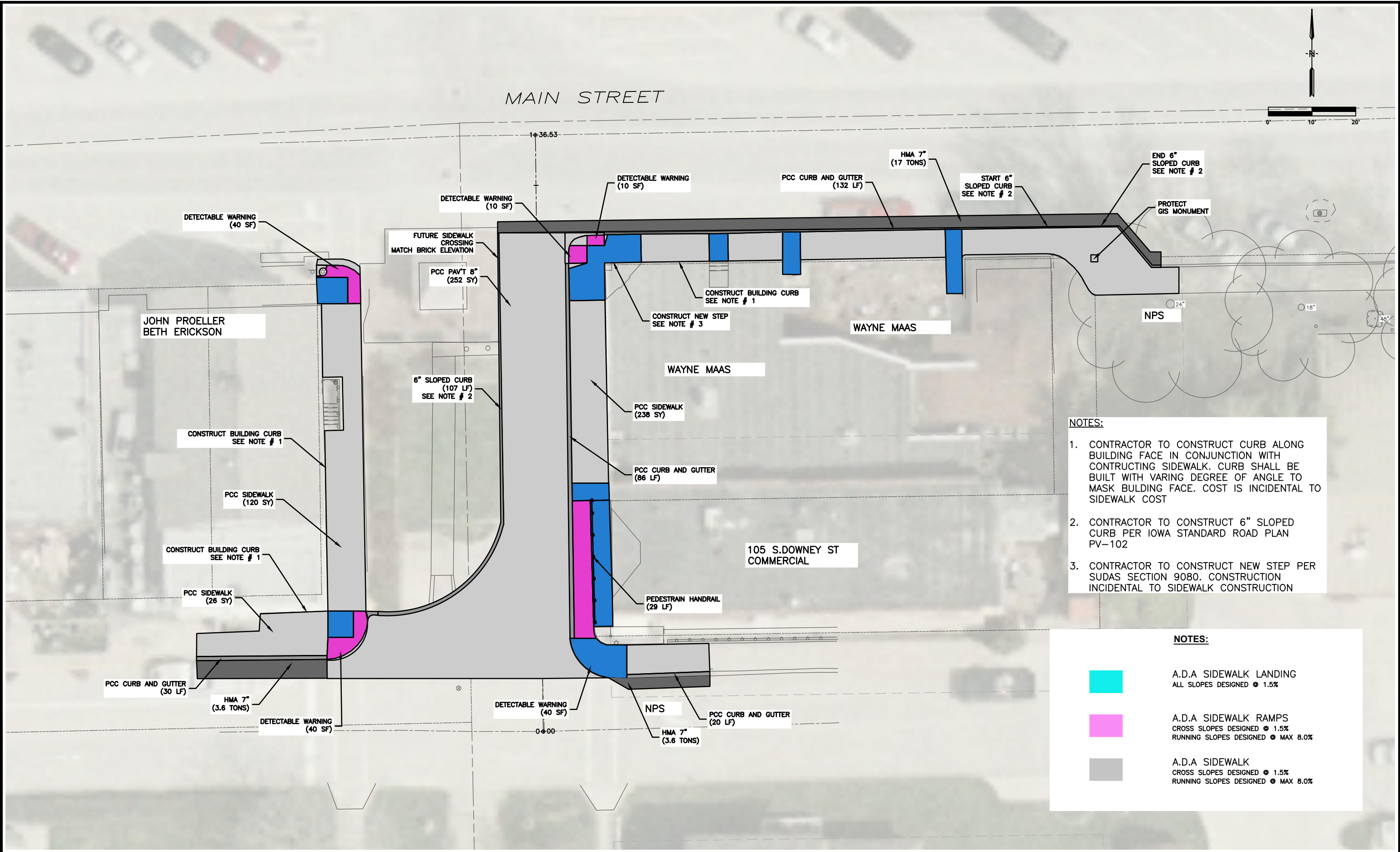
- NOTES:
1. CONTRACTOR TO PROTECT SIGNS
  2. CONTRACTOR TO PROTECT WATER VALVES
  3. CONTRACTOR TO PROTECT LIGHT AND POWER POLES
  4. CONTRACTOR TO PROTECT HISTORICAL BRICK AREA
  5. CONTRACTOR PROTECT GIS MONUMENTS AND PROPERTY PINS
  6. CONTRACTOR TO PROTECT MANHOLE AND UTILITY ACCESS
  7. SIGN TO BE REPLACED WITH BLACK POWDER COATED AND INSTALLED PER STANDARD ROAD PLAN SI-114
  8. CONTRACTOR TO PROTECT PRIVATE PROPERTY
  9. CONTRACTOR TO PROTECT RETAINING WALL
  10. CONTRACTOR TO COORDINATE REMOVAL AND REINSTALLATION ON PRIVATE PROPERTY WITH PROPERTY OWNER
  11. CONTRACTOR TO PROTECT HANDRAIL

DATE	REVISIONS	SCALE	AS NOTED	VERIFY SCALE	 VEENSTRA & KIMM, INC.	MAIN STREET SIDEWALK - PHASE 2 CITY OF WEST BRANCH 360 22nd Avenue • Suite 4 • Coralville, Iowa 52241-1563 319-466-1000 • 319-466-1008(FAX) • 888-241-8001(VA73)	DEMOLITION PLAN	DWG. NO.
		DRAWN	EDG	BAR IS ONE INCH ON ORIGINAL DRAWING. 0 1" IF NOT ONE INCH ON THIS SHEET, ADJUST SCALES ACCORDINGLY.				D.01
		CHECKED	DRS					PROJECT 368107
		APPROVED	DRS					
		DATE	4-2-15					
		ISSUED FOR	CONST					






PLOTTED: Thursday, April 02, 2015 10:07:31 AM

X-REFS: 368107 Topo & Aerial & 368107 Boundary  
FILE PATH: Z:\WEST BRANCH 368107 MAIN STREET SIDEWALK 2013\DRAWINGS\PRODUCTION DRAWINGS\02-PLAN



- NOTES:
1. CONTRACTOR TO CONSTRUCT CURB ALONG BUILDING FACE IN CONJUNCTION WITH CONSTRUCTING SIDEWALK. CURB SHALL BE BUILT WITH VARIOUS DEGREE OF ANGLE TO MASK BUILDING FACE. COST IS INCIDENTAL TO SIDEWALK COST
  2. CONTRACTOR TO CONSTRUCT 6" SLOPED CURB PER IOWA STANDARD ROAD PLAN PV-102
  3. CONTRACTOR TO CONSTRUCT NEW STEP PER SUDAS SECTION 9080. CONSTRUCTION INCIDENTAL TO SIDEWALK CONSTRUCTION

NOTES:

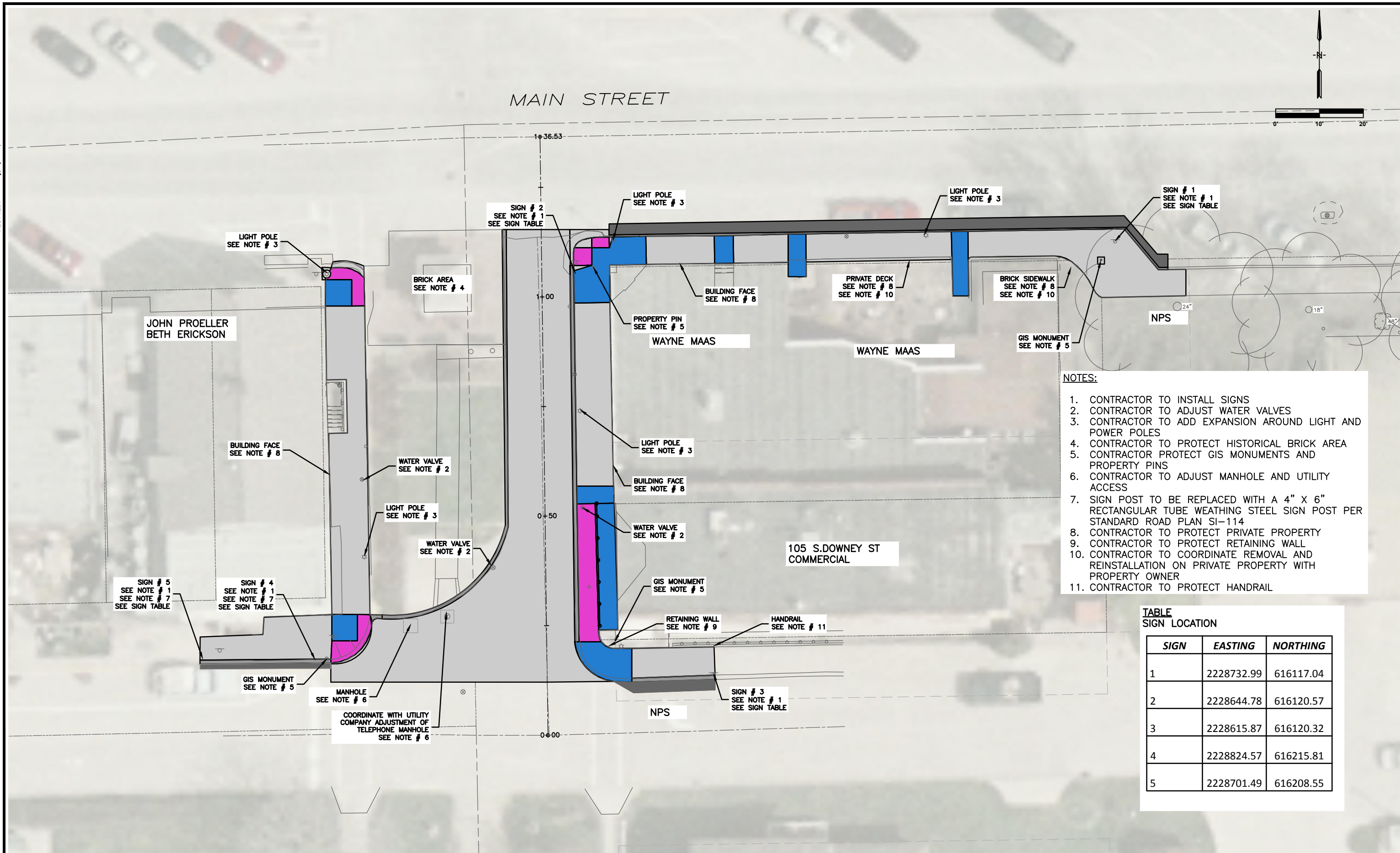
-  A.D.A SIDEWALK LANDING  
ALL SLOPES DESIGNED @ 1.5%
-  A.D.A SIDEWALK RAMPS  
CROSS SLOPES DESIGNED @ 1.5%  
RUNNING SLOPES DESIGNED @ MAX 8.0%
-  A.D.A SIDEWALK  
CROSS SLOPES DESIGNED @ 1.5%  
RUNNING SLOPES DESIGNED @ MAX 8.0%

DATE	REVISIONS	SCALE	AS NOTED	VERIFY SCALE	MAIN STREET SIDEWALK - PHASE 2 CITY OF WEST BRANCH			PLAN		DWG. NO.
		DRAWN	EDG	BAR IS ONE INCH ON ORIGINAL DRAWING.						D.02
		CHECKED	DRS	0 1"						
		APPROVED	DRS	IF NOT ONE INCH ON THIS SHEET, ADJUST SCALES ACCORDINGLY.						
		DATE	4-2-15							
		ISSUED FOR	CONST							PROJECT 368107



**VEENSTRA & KIMM, INC.**

360 22nd Avenue • Suite 4 • Coralville, Iowa 52241-1563  
319-466-1000 • 319-466-1008(FAX) • 888-241-8001(WATS)



DATE	REVISIONS	SCALE	AS NOTED		MAIN STREET SIDEWALK - PHASE 2 CITY OF WEST BRANCH	PLAN - NOTES	DWG. NO.		
		DRAWN	EDG					D.03	
		CHECKED	DRS						BAR IS ONE INCH ON ORIGINAL DRAWING.
		APPROVED	DRS						0  1"
		DATE	4-2-15						IF NOT ONE INCH ON THIS SHEET, ADJUST SCALES ACCORDINGLY.
		ISSUED FOR	CONST	VEENSTRA & KIMM, INC. 860 22nd Avenue • Suite 4 • Coralville, Iowa 52241-1565 319-466-1000 • 319-466-1000(FAX) • 888-241-8001(WATS)		PROJECT 36810			



PLOTTED: Thursday, April 02, 2015 10:08:01 AM

X-REFS: 368107 Topo & 2012-3-1 Aerial 2  
FILE PATH: Z:\WEST BRANCH 368107 MAIN STREET SIDEWALK 2013\DRAWINGS\\_PRODUCTION DRAWINGS\G.01-CONTROL



Numb.	Northing	Easting	Elevation	Discrip.
106	616217.8	2228421	724.351	cp mag nail
107	616264.6	2228707	717.792	cp mag nail
108	616272.8	2229021	710.255	cp mag nail
109	616242.4	2228676	719.232	sc alum disc
110	616090.9	2228704	716.6434	cp mag nail

DATE	REVISIONS	SCALE	AS NOTED
		DRAWN	EDG
		CHECKED	DRS
		APPROVED	DRS
		DATE	4-2-15
		ISSUED FOR	CONST

VERIFY SCALE  
BAR IS ONE INCH ON ORIGINAL DRAWING.  
0 1"  
IF NOT ONE INCH ON THIS SHEET, ADJUST SCALES ACCORDINGLY.



MAIN STREET SIDEWALK - PHASE 2  
CITY OF WEST BRANCH

360 22nd Avenue • Suite 4 • Coralville, Iowa 52241-1563  
319-466-1000 • 319-466-1008 (FAX) • 888-241-8001 (WATS)

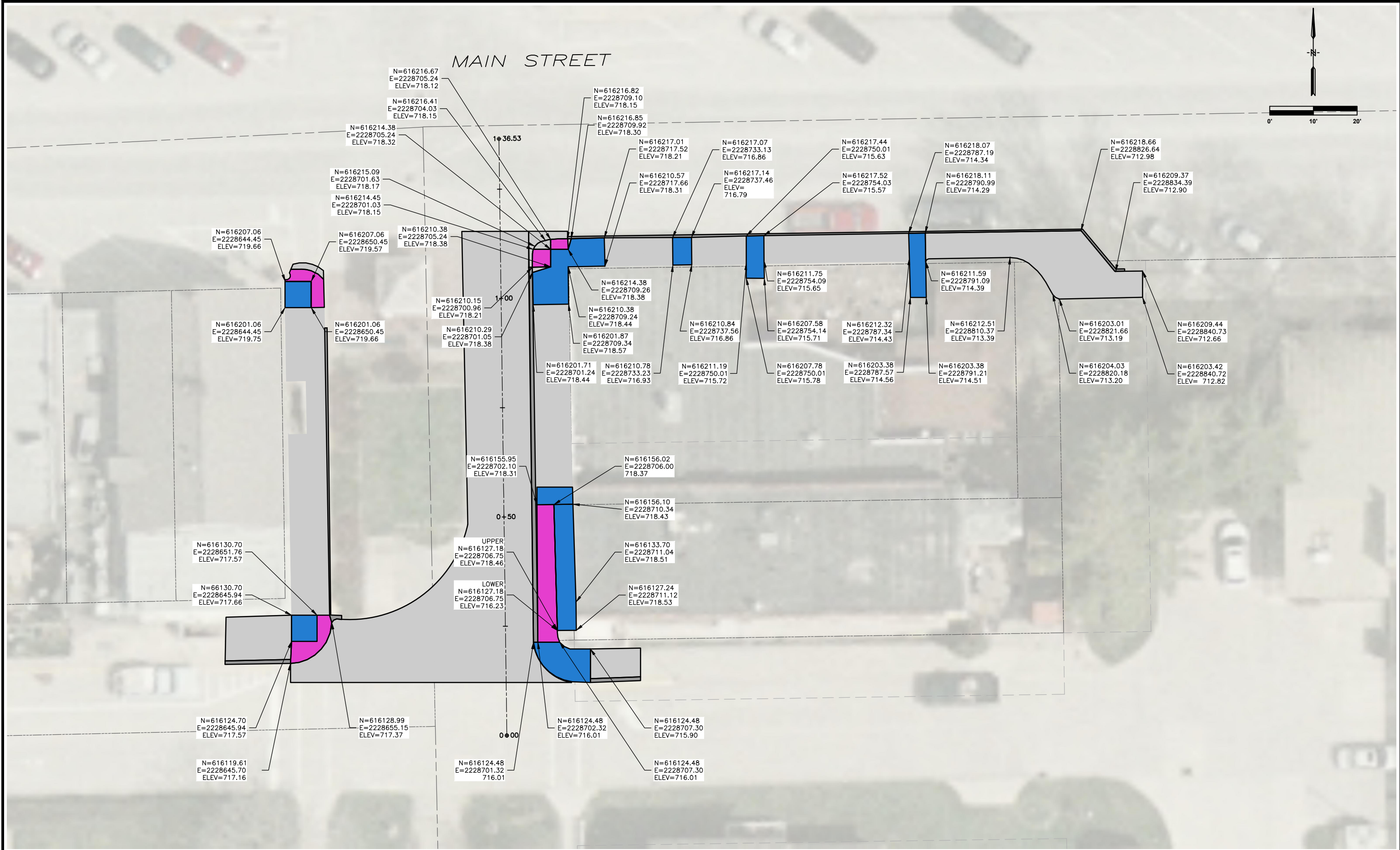
CONTROL

DWG. NO.
G.01
PROJECT 368107



PLOTTED: Thursday, April 02, 2015 10:08:14 AM

X-REFS: Aerial & 368107 Boundary  
FILE PATH: Z:\WEST BRANCH 368107 MAIN STREET SIDEWALK 2013\DRAWINGS\PRODUCTION DRAWINGS\S.01-SIDEWALK



DATE	REVISIONS	SCALE	AS NOTED	VERIFY SCALE	MAIN STREET SIDEWALK - PHASE 2 CITY OF WEST BRANCH		SIDEWALK TABULATIONS		DWG. NO.
		DRAWN	EDG	BAR IS ONE INCH ON ORIGINAL DRAWING.	360 22nd Avenue • Suite 4 • Coralville, Iowa 52241-1563 319-466-1000 • 319-466-1008(FAX) • 888-241-8001(VA73)		S.01		PROJECT 368107
		CHECKED	DRS	IF NOT ONE INCH ON THIS SHEET, ADJUST SCALES ACCORDINGLY.					
		APPROVED	DRS						
		DATE	4-2-15						
		ISSUED FOR	CONST						

