

To: City Council and Mayor
From: Matt Muckler, City Administrator
Date: October 15, 2016
Weekly Council Update

- **South Downey Construction Schedule:** Rathje Construction worked this week to switch traffic over to the east side of S. Downey so that work can be completed on the west side of the street. Crews began the installation of stormwater infrastructure as well last week. Stormwater work is expected to be completed by the middle of next week. Grading and widening will then take place and is expected to be finished by the end of October. The approaches to Industrial Drive and Kum N Go will be paved the first week of November. Paving is scheduled for the week of November 7th and backfill will take place the following week. Permanent striping will be completed and all traffic control devices are expected to be pulled before Thanksgiving.

- **Roger Laughlin and Leslie Brick Recognized by Iowa League of Cities:** Mayor Roger Laughlin and Deputy City Clerk Leslie Brick were among 165 city officials from across the state to be recognized for their participation in the 2015-2016 Municipal Leadership Academy (MLA). The workshop series is conducted every other year after the regular municipal elections and is the only training opportunity that gives city officials in Iowa a broad-based look at the many aspects of city government. Topics covered during the workshops included council meeting procedures, city budgeting and economic development.

Mayor Laughlin, Deputy City Clerk Brick and other MLA graduates were recognized for their accomplishments during a special awards ceremony at the Iowa League of Cities Annual Conference & Exhibit in Des Moines on September 15th. Over 500 city officials attempted parts of the MLA workshops; however, to graduate an official needed to attend three out of the four MLA sessions. After the recognition event, graduates received a certificate honoring their completion of training.

MLA offers a comprehensive overview of municipal government and is presented by staff of the Iowa League of Cities, the Institute of Public Affairs at the University of Iowa and the Office of State and Local Government Programs at Iowa State University Extension.

- **Park Space in PV Monthly Report:** The Fehr Graham Monthly Project Status Report for work completed in September at the new park space in Pedersen Valley is attached to this week's *Update*.

- **CIP Cost Estimate Updates:** Due to some updated estimates and the inclusion of water, sewer and stormwater costs into the CIP, the projections for the CIP have changed substantially since the August 26, 2016 Version of the CIP. An updated version of the CIP, dated October 11, 2016 was distributed last week with the Council Packet. During the last few days, City Engineer Dave Schechinger has provided additional cost estimates for the College Street Bridge Project and updated estimates for the Foster Street Sidewalk Project and Beranek Park Improvements. These documents are attached to this week's *Update*.

- **4th Street Water Main:** The issue of the 4th Street water main will be discussed at the Monday October 17th Weekly Council Update. Previously, the Council approved a change order for \$49,247.50. Quotes for the project (to be completed before winter) received up to this point have exceeded that amount. The lowest received thus far is \$58,780. In lieu of accepting this quote, the Council could extend the deadline for the work. This would likely bring a lower bid but would delay the installation of the water main, sidewalk, a couple of approaches and finish grading until spring.

- **Joint Work Session of Council and P & Z:** KLM Investments has requested a Joint Work Session of the City Council and the Planning and Zoning (P&Z) Commission to discuss the Meadows Subdivision Phase 3, which would include commercial development along Main Street. This meeting has been tentatively been scheduled for Tuesday, Nov. 15th at 7:00 p.m. A P&Z Meeting will immediately follow the Joint Work Session.

- **Upcoming City Meetings & Events:** Please see the Calendar of Events on the City Website <http://westbranchiowa.org/home> for a complete list of upcoming events. There are several meetings and other community events currently scheduled in the next few weeks:

- | | |
|---|--|
| ▪ Monday October 17th at 7:00 p.m. | Regular City Council Meeting |
| ▪ Thursday October 20th at 6:30 p.m. | Park & Rec. Mtg. at City Office |
| ▪ Thursday October 20th at 6:30 p.m. | Library Board of Trustees Meeting at WBPL |
| ▪ Friday October 21st at 7:30 p.m. | WB vs. Clayton Ridge at Little Rose Bowl |
| ▪ Monday October 31st, 5:00-8:00 p.m. | Halloween Trick or Treat |
| ▪ Monday October 31st, 5:00-7:30 p.m. | Halloween Chili Supper at the Fire Station |
| ▪ Monday October 31st, 6:00 p.m. | Halloween Costume Contest at Fire Station |
| ▪ Monday November 7th at 7:00 p.m. | Regular City Council Meeting |
| ▪ Tuesday November 8th at 6:30 p.m. | Animal Control Commission Meeting |
| ▪ Thursday November 10th at 6:30 p.m. | Library Board of Trustees Meeting at WBPL |
| ▪ Friday November 11th | Veterans Day Holiday – City Office Closed |
| ▪ Monday November 15th at 7:00 p.m. | Joint Work Session of Council and P&Z |
| ▪ Monday Nov. 15th (after Work Session) | Planning & Zoning Commission Meeting |
| ▪ Monday November 21st at 7:00 p.m. | Regular City Council Meeting |
| ▪ Thursday Nov. 24th & Fri. Nov. 25th | Thanksgiving Holiday – City Office Closed |

The information provided is one-way communication and should not be discussed among you as this would be a violation of the open meeting law.

MONTHLY PROJECT STATUS REPORT
Work Completed in September 2016
Pedersen Valley Park
Project No. 16-072

SCOPE		SCHEDULE UPDATE	
Task/Item	% Complete	Target	Actual
1.0 Topographic Survey	100%	6/6/16	6/3/16
2.0 Construction Plans	11.5%	2/1/17	
<i>2.1 Preliminary Plans</i>	<i>29%</i>	<i>11/15/16</i>	
<i>2.2 Check Plans</i>	<i>0%</i>	<i>12/15/16</i>	
<i>2.3 Final Plans</i>	<i>0%</i>	<i>2/1/17</i>	
3.0 Site Assessments & Permits	50%	2/1/17	
4.0 Project Coordination	18%	2/1/17	
5.0 Construction Services	0%	11/1/17	
<i>5.1 Bid Letting</i>	<i>0%</i>	<i>3/28/17</i>	
<i>5.2 Construction</i>	<i>0%</i>	<i>11/1/17</i>	

SUMMARY OF WORK DONE LAST MONTH

- Met with city staff to discuss options and gather additional information
- Developed two additional concept plans
- Prepared for public meeting and council meeting to discuss concept plans

FORECAST OF WORK TO BE COMPLETED NEXT MONTH

- Receive direction on preferred design alternative
- Continue preliminary design
- Schedule third work session with client to discuss project concepts, general design, and challenges identified to date

PROBLEMS ENCOUNTERED/RECOMMENDED SOLUTIONS

- Project is behind schedule after put on hold for acquisition negotiations/will continue to work diligently towards late winter letting

ACTION NEEDED BY CITY

- Direction on pursuit of improvements within pipeline easement

OVERALL PROJECT STATUS

The project is behind schedule after being put on hold while city explored land acquisition. Additional information about the building size(s) and discussions with the park board and council were helpful to zero in on direction of the design. Project is on track but approximately two months behind the contract dates.

Estimate of Cost
College Street Improvements: Participating
West Branch, Iowa
October 11, 2016

	Description	Unit	Estimated Quantities	Unit Price	Extended Price
1	CLEAR + GRUBB	Units	110	\$15.00	\$1,650.00
2	EXCAVATION, CL 10, WASTE	CY	1320	\$15.00	\$19,800.00
3	TOPSOIL, STRIP, SALVAGE + SPREAD	CY	500	\$5.00	\$2,500.00
4	MODIFIED SUBBASE	CY	350	\$40.00	\$14,000.00
5	STD/S-F PCC PAV'T, CL C CL 3, 7"	SY	1860	\$60.00	\$111,600.00
6	SURF, DRIVEWAY, CL A CR STONE	Tons	200	\$25.00	\$5,000.00
7	INTAKE, SW-501	Ea.	6	\$2,500.00	\$15,000.00
8	SUBDRAIN, TILE, 4"	LF	1100	\$10.00	\$11,000.00
9	SUBDRAIN OUTLET, RF-19E	Ea.	12	\$300.00	\$3,600.00
10	STORM SWR G-M/CAS, TRNCHED, RCP 2000D, 15"	LF	110	\$50.00	\$5,500.00
11	STORM SWR G-M/CAS, TRNCHED, RCP 2000D, 24"	LF	310	\$60.00	\$18,600.00
12	INTAKE, SW-512, 24"	Ea.	1	\$2,000.00	\$2,000.00
13	MANHOLE, SAN SWR, SW-301, 48"	Ea.	2	\$5,000.00	\$10,000.00
14	MANHOLE, STORM SWR, SW-401, 48"	LF	1	\$5,000.00	\$5,000.00
15	RMVL OF PAV'T	SY	595	\$10.00	\$5,950.00
16	RMVL OF INTAKE + UTILITY ACCESS	Ea.	5	\$1,000.00	\$5,000.00
17	SIDEWALK, PCC, 4"	SY	219	\$50.00	\$10,950.00
18	SIDEWALK, PCC, 6"	SY	311	\$60.00	\$18,660.00
19	DETECTABLE WARNING - CURB RAMP	SF	60	\$40.00	\$2,400.00
20	DRIVEWAY, PCC, 6"	SY	109	\$40.00	\$4,360.00
21	DRIVEWAY, PCC, 7"	SY	153	\$50.00	\$7,650.00
22	CONSTRUCTION SURVEY	LS	1	\$10,000.00	\$10,000.00
23	PAINTED PAV'T MARK, WATERBORNE/SOLVENT	STA	2	\$500.00	\$1,000.00
24	TRAFFIC CONTROL	LS	1	\$2,000.00	\$2,000.00
25	MOBILIZATION	LS	1	\$25,000.00	\$25,000.00
26	SILT FENCE	LF	500	\$2.00	\$1,000.00
27	RMVL OF SILT FENCE	LF	500	\$0.50	\$250.00
28	CLEAN-OUT OF SILT FENCE	LF	500	\$1.00	\$500.00
				Subtotal	\$319,970.00
				15% Contingency	\$48,000.00
				Roadway Participating Subtotal	\$367,970.00
29	BRIDGE & APPROACH PAVEMENT	LS	1	\$705,000.00	\$705,000.00
				Construction Total	\$1,072,970.00
				Preliminary Engineering for Participating	\$36,010.00
				Final Design Engineering for Participating	\$96,144.00
				Coordination for Easements and Right-of-Way	\$44,500.00
				Purchase Easements and Right-of-Way	\$70,000.00
				Resident Engineering during Construction	\$150,000.00
				Project Total	\$1,469,624.00
				IDOT Maximum Contribution \$	1,000,000.00
				City Portion (Participating) \$	469,624.00

Estimate of Cost
College Street Improvements: Non-Participating
West Branch, Iowa
October 11, 2016

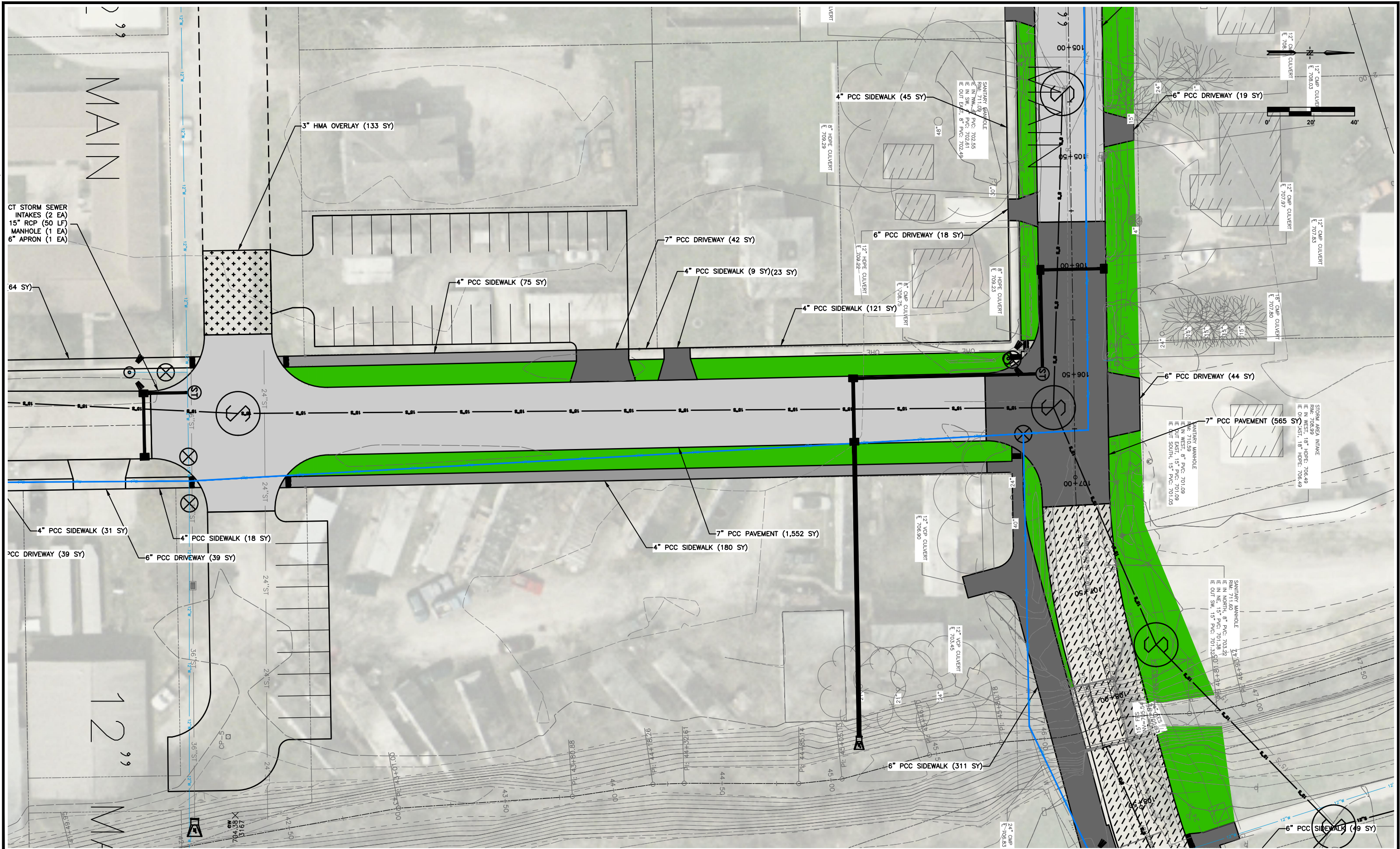
	Description	Unit	Estimated Quantities	Unit Price	Extended Price
1	CLEAR+ GRUBB	Units	20	\$15.00	\$300.00
2	EXCAVATION, CL 10, WASTE	CY	2000	\$15.00	\$30,000.00
3	TOPSOIL, STRIP, SALVAGE +SPREAD	CY	600	\$5.00	\$3,000.00
4	MODIFIED SUBBASE	CY	430	\$40.00	\$17,200.00
5	STD/S-F PCC PAV'T, CL C CL 3, 7"	SY	2338	\$60.00	\$140,280.00
6	HMA (300K ESAL) I-S, 1/2", NO FRIC	Tons	25	\$90.00	\$2,250.00
7	SURF, DRIVEWAY, CL A CR STONE	Tons	50	\$25.00	\$1,250.00
8	INTAKE, SW-501	Ea.	6	\$2,500.00	\$15,000.00
9	SUBDRAIN, TILE, 4"	LF	1100	\$10.00	\$11,000.00
10	SUBDRAIN OUTLET, RF-19E	Ea.	14	\$300.00	\$4,200.00
11	STORM SWR G-M/CAS,TRNCHED, RCP 2000D,15"	LF	150	\$50.00	\$7,500.00
12	STORM SWR G-M/CAS,TRNCHED, RCP 2000D,18"	LF	30	\$55.00	\$1,650.00
13	STORM SWR G-M/CAS,TRNCHED, RCP 2000D,24"	LF	110	\$60.00	\$6,600.00
14	APRON, CONC, 24"	Ea.	1	\$1,000.00	\$1,000.00
15	MANHOLE, SAN SWR, SW-301, 48"	Ea.	2	\$5,000.00	\$10,000.00
16	MANHOLE, STORM SWR, SW-401, 48"	LF	1	\$5,000.00	\$5,000.00
17	RMVL OF PAV'T	SY	250	\$10.00	\$2,500.00
18	RMVL OF INTAKE+ UTILITY ACCESS	Ea.	1	\$1,000.00	\$1,000.00
19	SIDEWALK, PCC, 4"	SY	493	\$50.00	\$24,650.00
20	DETECTABLE WARNING - CURB RAMP	SF	60	\$40.00	\$2,400.00
21	DRIVEWAY, PCC, 6"	SY	142	\$40.00	\$5,680.00
22	DRIVEWAY, PCC, 7"	SY	42	\$50.00	\$2,100.00
23	CONSTRUCTION SURVEY	LS	1	\$10,000.00	\$10,000.00
24	PAINTED PAV'T MARK, WATERBORNE/SOLVENT	STA	2	\$500.00	\$1,000.00
25	TRAFFIC CONTROL	LS	1	\$2,000.00	\$2,000.00
26	MOBILIZATION	LS	1	\$25,000.00	\$25,000.00
27	WATER MAIN, TRENCHED, PVC, 6"	LF	1414	\$35.00	\$49,490.00
28	VALVE, GATE, DIP, 6"	Ea.	8	\$1,000.00	\$8,000.00
29	SILT FENCE	LF	500	\$2.00	\$1,000.00
30	RMVL OF SILT FENCE	LF	500	\$0.50	\$250.00
31	CLEAN-OUT OF SILT FENCE	LF	500	\$1.00	\$500.00
32	MISCELLANEOUS SANITARY SEWER REPAIRS	LS	1	\$30,000.00	\$30,000.00
				Subtotal	\$421,800.00
				15% Contingency	\$63,000.00
				Construction Total	\$484,800.00
				15% Engineering	\$ 72,700.00
				Project Total	\$ 557,500.00

Summary of Project Cost
College Street Improvements: Participating + Non-participating
West Branch, Iowa
October 11, 2016

Participating	\$ 1,469,624.00
Non-participating	\$ 557,500.00
Total	\$ 2,027,124.00
IDOT Contribution	\$ 1,000,000.00
City Contribution	\$ 1,027,124.00
CIP Budget	\$ 885,000.00
Deficit	\$ 142,124.00

PLOTTED: Tuesday, October 11, 2016 1:39:52 PM

X-REFS: 368191 Topo & Sanitary Map EDG (4-18-16) & Water Model 2016 & 2012-3-1 Arlesi 2 & Parcels
 FILE PATH: Z:\WEST BRANCH CIP\FY 2016-2017\CONCEPTS CIP 2017



DATE	REVISIONS	SCALE	AS NOTED
		DRAWN	LJB
		CHECKED	DRS
		APPROVED	DRS
		DATE	10-11-2016
		ISSUED FOR	REVIEW

VERIFY SCALE
BAR IS ONE INCH ON ORIGINAL DRAWING.
0 1"
IF NOT ONE INCH ON THIS SHEET, ADJUST SCALES ACCORDINGLY.

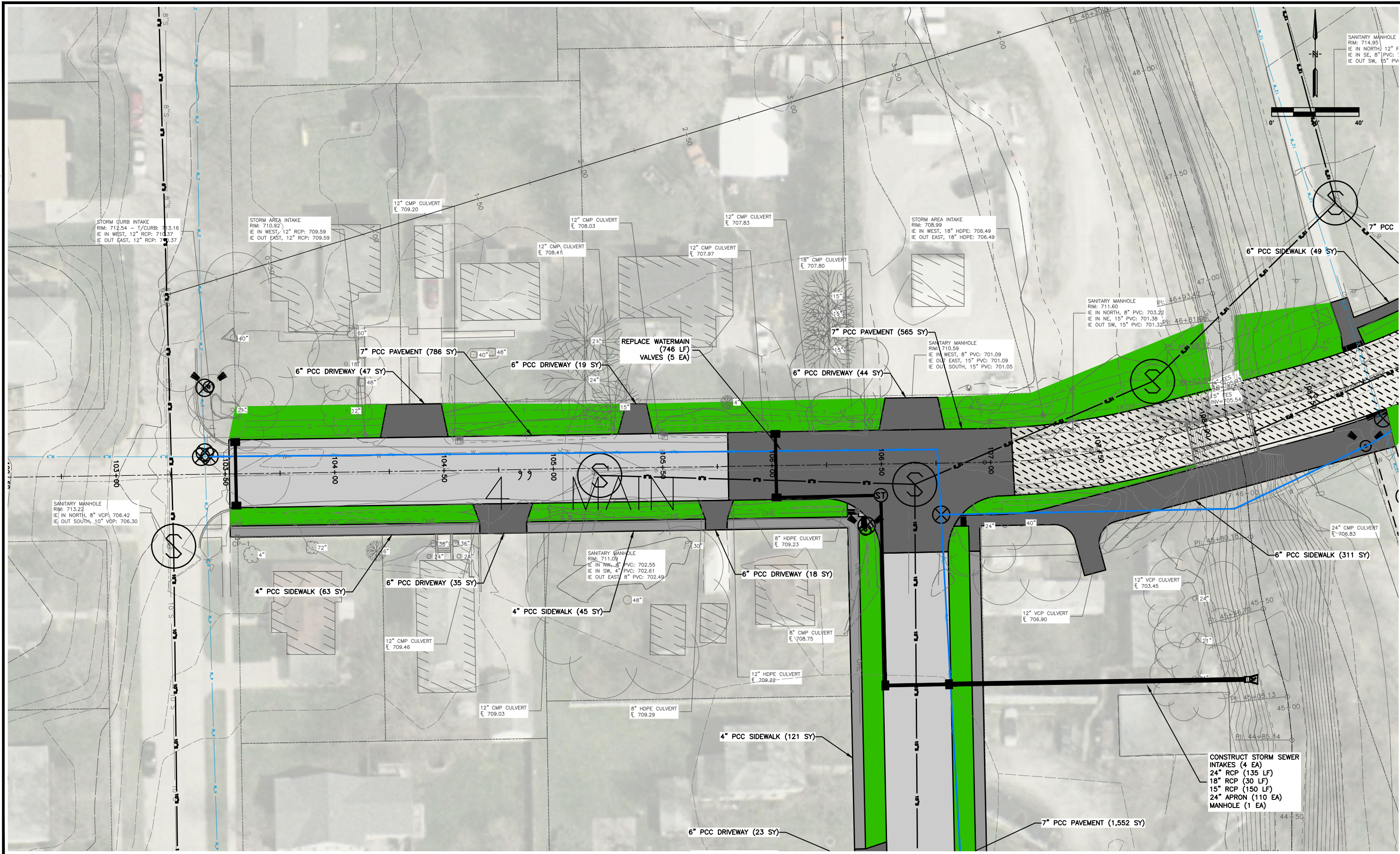


CIP 2017
 CITY OF WEST BRANCH

860 22nd Avenue • Suite 4 • Coralville, Iowa 52241-1565
 319-466-1000 • 319-466-1008(FAX) • 888-241-8001(WATS)

2ND STREET - NORTH

DWG. NO.
3
PROJECT 368XXX



DATE	REVISIONS	SCALE	AS NOTED
		DRAWN	LJB
		CHECKED	DRS
		APPROVED	DRS
		DATE	10-11-2016
		ISSUED FOR	REVIEW

VERIFY SCALE
 BAR IS ONE INCH ON ORIGINAL DRAWING.
 0 1" IF NOT ONE INCH ON THIS SHEET, ADJUST SCALES ACCORDINGLY.

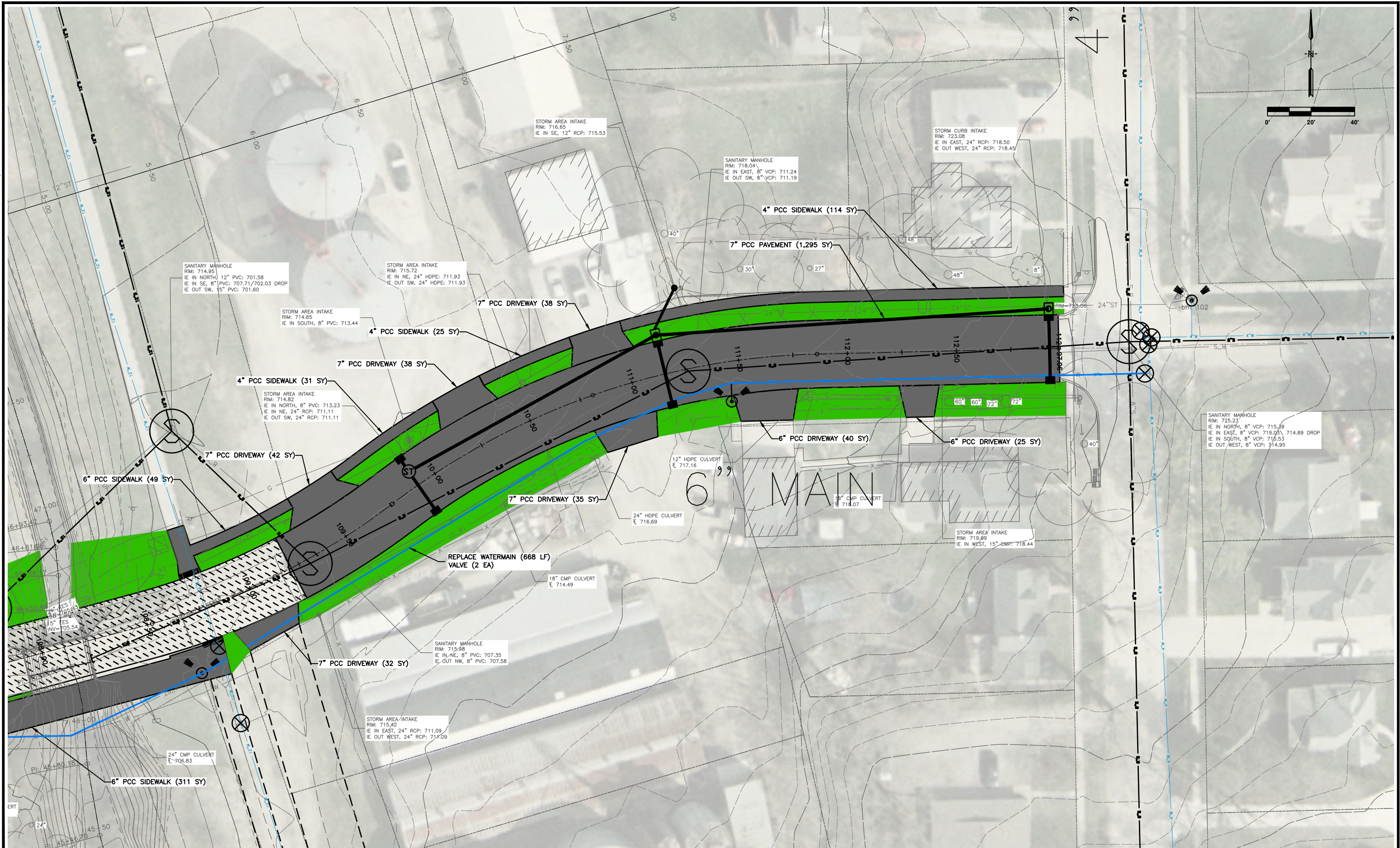


CIP 2017
 CITY OF WEST BRANCH

860 22nd Avenue • Suite 4 • Coralville, Iowa 52241-1565
 319-466-1000 • 319-466-1008(FAX) • 888-241-8001(WATS)

COLLEGE STREET

DWG. NO.
4
PROJECT 368XXX



DATE	REVISIONS	SCALE	AS NOTED
		DRAWN	LJB
		CHECKED	DRS
		APPROVED	DRS
		DATE	10-11-2016
		ISSUED FOR	REVIEW

VERIFY SCALE
BAR IS ONE INCH ON ORIGINAL DRAWING.
0 1"
IF NOT ONE INCH ON THIS SHEET, ADJUST SCALES ACCORDINGLY.



CIP 2017
 CITY OF WEST BRANCH

860 22nd Avenue • Suite 4 • Coralville, Iowa 52241-1565
 319-466-1000 • 319-466-1008(FAX) • 888-241-8001(WATS)

COLLEGE STREET

DWG. NO.
5
PROJECT 368XXX

Estimate of Cost
Foster Street Sidewalk Improvements
West Branch, Iowa
October 11, 2016

	Description	Unit	Estimated Quantities	Unit Price	Extended Price
1	MOBILIZATION	LS	1	\$ 1,000.00	\$ 1,000.00
2	TRAFFIC CONTROL	LS	1	\$ 500.00	\$ 500.00
3	CONSTRUCTION STAKING	LS	1	\$ 4,000.00	\$ 4,000.00
4	SEEDING	ACRE	0.2	\$ 7,900.00	\$ 1,580.00
5	REMOVE & REINSTALL MAILBOXES	EA	3	\$ 250.00	\$ 750.00
6	REMOVE DRIVEWAY	SY	70	\$ 11.50	\$ 805.00
7	4" PCC SIDEWALK	SY	352	\$ 55.00	\$ 19,360.00
8	PCC DRIVEWAY W/CURB & GUTTER	SY	30	\$ 65.00	\$ 1,950.00
9	PCC DRIVEWAY	SY	36	\$ 65.00	\$ 2,340.00
10	MODIFIED SUBBASE	CY	20	\$ 100.00	\$ 2,000.00
11	COMBINED RETAINING WALL - SIDEWALK	SF	240	\$ 14.00	\$ 3,360.00
12	3/4" CRUSHED ROCK OR STONE	CY	40	\$ 80.00	\$ 3,200.00
13	TYPE B CONCRETE STAIRS WITH HANDRAIL	EA	1	\$ 4,100.00	\$ 4,100.00
14	RAISE FIXTURE	EA	2	\$ 325.00	\$ 650.00
15	SIGNS	EA	2	\$ 320.00	\$ 640.00
16	TOPSOIL, FURN + SPREAD	CY	85	\$ 63.00	\$ 5,355.00
17	EXCAVATION, CL 10	CY	150	\$ 27.00	\$ 4,050.00
18	CLEAR+ GRUBB	Units	200	\$ 15.00	\$ 3,000.00
				Subtotal	\$ 58,640.00
				Contingency	\$ 5,860.00
				Construction Total	\$ 64,500.00
				Engineering (15%)	\$ 9,650.00
				Project Total	\$ 74,150.00

Estimate of Cost
Beranek Street Improvements
West Branch, Iowa
October 12, 2016

	Description	Unit	Estimated Quantities	Unit Price	Extended Price
1	CLEAR+ GRUBB	Units	150	\$ 15.00	\$ 2,250.00
2	EXCAVATION, CL 10, WASTE	CY	250	\$ 15.00	\$ 3,750.00
3	TOPSOIL, STRIP, SALVAGE+ SPREAD	CY	110	\$ 5.00	\$ 550.00
4	MODIFIED SUBBASE	CY	110	\$ 40.00	\$ 4,400.00
5	HMA (300K ESAL) BASE, 1/2"	Tons	700	\$ 90.00	\$ 63,000.00
6	SURF, DRIVEWAY, CL A CR STONE	Tons	100	\$ 25.00	\$ 2,500.00
7	RMVL OF EXIST STRUCT	LS	1	\$ 5,000.00	\$ 5,000.00
8	APRON, CONC, 12"	Ea.	1	\$ 750.00	\$ 750.00
9	SEGMENTAL BLOCK RETAIN WALL	SF	300	\$ 30.00	\$ 9,000.00
10	INTAKE, SW-501	Ea.	1	\$ 2,500.00	\$ 2,500.00
11	SUBDRAIN, TILE, 6"	LF	650	\$ 10.00	\$ 6,500.00
12	SUBDRAIN OUTLET, RF-19E	Ea.	2	\$ 300.00	\$ 600.00
13	STORM SWR G-M/CAS,TRNCHED, RCP 2000D,12"	LF	16	\$ 50.00	\$ 800.00
14	ENGINEER FABRIC	SY	10	\$ 10.00	\$ 100.00
15	EROSION STONE	Tons	20	\$ 35.00	\$ 700.00
16	RMVL OF PAV'T	SY	1080	\$ 10.00	\$ 10,800.00
17	SIDEWALK, PCC, 6"	SY	105	\$ 50.00	\$ 5,250.00
18	DETECTABLE WARNING - CURB RAMP	SF	30	\$ 40.00	\$ 1,200.00
19	CURB+ GUTTER, PCC, 3.5'	LF	650	\$ 25.00	\$ 16,250.00
20	DRIVEWAY, PCC, 6"	SY	170	\$ 40.00	\$ 6,800.00
21	CONSTRUCTION SURVEY	LS	1	\$ 5,000.00	\$ 5,000.00
22	PAINTED PAV'T MARK, WATERBORNE/SOLVENT	STA	1.5	\$ 500.00	\$ 750.00
23	PAINTED SYMBOL+ LEGEND, WATERBORNE/SOLVNT	Ea.	2	\$ 200.00	\$ 400.00
24	TRAFFIC CONTROL	LS	1	\$ 1,000.00	\$ 1,000.00
25	MOBILIZATION	LS	1	\$ 7,500.00	\$ 7,500.00
26	WATER MAIN, TRENCHED, PVC, 6"	LF	640	\$ 35.00	\$ 22,400.00
27	VALVE, GATE, DIP, 6"	Ea.	3	\$ 1,000.00	\$ 3,000.00
28	FIRE HYDRANT ASSEMBLY, WM-201	Ea.	1	\$ 5,000.00	\$ 5,000.00
29	SILT FENCE	LF	500	\$ 2.00	\$ 1,000.00
30	RMVL OF SILT FENCE	LF	500	\$ 0.50	\$ 250.00
31	CLEAN-OUT OF SILT FENCE	LF	500	\$ 1.00	\$ 500.00
32	5" HMA DRIVEWAY FOR CASSABAUM	Tons	80	\$ 85.00	\$ 6,800.00
33	NEW SHED FOR CASSABAUM PROPERTY	LS	1	\$ 24,000.00	\$ 24,000.00
34	PARK SHELTER FLOOR REMOVE & REPLACE	SY	400	\$ 50.00	\$ 20,000.00
Subtotal					\$240,300.00
Contingency					\$36,050.00
Construction Total					\$276,350.00
Engineering (10%)					\$ 27,000.00
Project Total					\$ 303,350.00